



OM-ML Series of Single Channel Dataloggers

OM-ML Series

\$145

Basic Unit

- ✓ Models for Temperature and Event Logging
- ✓ Robust Waterproof Enclosure
- ✓ Easy to Use Software

The OM-ML series includes a range of robust and reliable dataloggers. They are simple to set up and used with a software interface which gives rapid and easy access to the stored information. Two base models are available including a temperature logger and an event logger. Both units feature a rugged injection molded IP67 waterproof enclosure.

Temperature Dataloggers

The temperature loggers are available for several temperature ranges. Models are available with both internal and external sensing. The external temperature sensors include the OM-THML1, air sensor and OM-THML2 general purpose/penetration probe. The temperature loggers also include an option for contact status logging. The memory capacity of all the temperature loggers is 2000 samples.

Event Dataloggers

The event loggers have been designed to monitor either a "volt-free" contact or a TTL signal, counting up to 6000 contacts per minute.

The event logger has two modes of operation. Event mode records the time and date when the switch contact closes. In counter mode the logger totalizes the



Temperature Logger



Event Logger

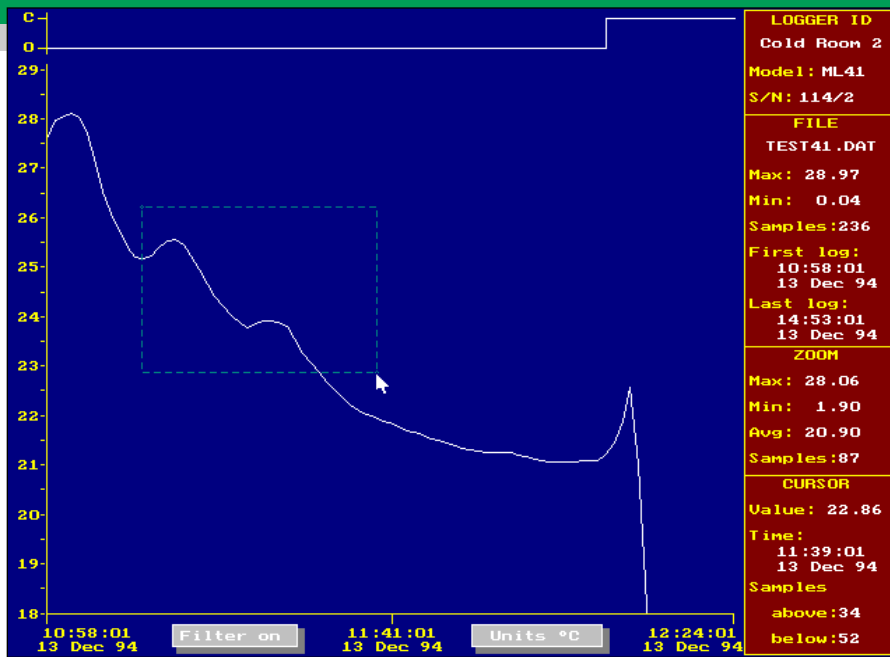
switch activity within each user-set period of between one minute and 24 hours. At the end of each period the logger stores the total as a reading and then restarts the count. Totals are retained for each period.

Software

The software which is compatible with both DOS and Windows is designed to give the user a simple way of setting up, starting and retrieving data from the datalogger. Following simple menu instructions, it is easy to use the software to generate reports and graphs, or send the data to other software programs for more sophisticated analysis. The logger is first configured by creating a Set Up. The Set Up includes start mode (immediately, after a time delay or by using a magnetic key), logging interval and alarm setting. The Set Up is then sent to the

datalogger through the computer serial port. The datalogger may then be disconnected from the computer and placed into its application. After the logging session, the data may be retrieved from the logger using the software. The logger will retain the old data until a new logging session is started.





16 Bit Counter Mode: 1000 periods (up to 65535 counts per period)
Event Mode: 1000 events
OM-MLE8
8 Bit Counter Mode: 8000 periods (up to 255 counts per period)
16 Bit Counter Mode: 4000 periods (up to 65535 counts per period)
Event Mode: 4000 events
COMMON SPECIFICATIONS (TEMPERATURE AND EVENT DATALOGGER)
Operating Temperature: -40°F to 176°F
Enclosure: IP67
Battery: Lithium, 5 year life
Size: 3.4" x 1.9"
Weight: 4 oz.(approx.)

Specifications

TEMPERATURE DATALOGGERS

Sensor Accuracy: ±0.4°F from 30°F to 160°F, °0.8°F elsewhere

Resolution: 0.25°F at 68°F

Memory: 2000 readings

EVENT DATALOGGERS

Input Type: Contact closure or TTL

Sensing Current: <12µA

Minimum Switch Closed Time: 5mS

Minimum Switch Open Time: 5mS

Maximum Switch Closure

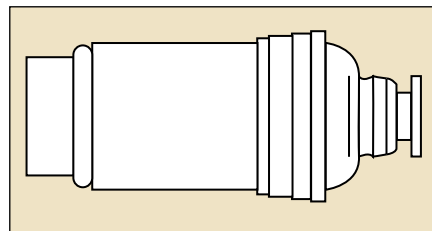
Frequency: 100 Hz (in 8 or 16 bit counter mode)

Time Period Lengths: 1 minute to 24 hours in 1 minute steps

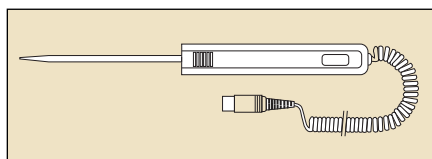
Memory

OM-MLE2

8 Bit Counter Mode: 2000 periods (up to 255 counts per period)



OM-THML1 Probe



OM-THML2 Probe

Temperature Loggers

To Order (Specify Model No.)		
Model No.	Price	Description
OM-ML40	\$145	Temperature logger with internal sensing, -40°F to 110°F
OM-ML41	185	Temperature logger with internal sensing and contact status logging, -40°F to 110°F, requires contact cable
OM-ML42	145	Temperature logger with external sensing, -40°F to 110°F, requires OM-THML1 or OM-THML2
OM-ML80	145	Temperature logger with internal sensing, 30°F to 180°F
OM-ML81	185	Temperature logger with internal sensing, 30°F to 180°F and contact status, requires contact cable
OM-ML82	145	Temperature logger with external sensing 30°F to 180°F, requires OM-THML1 or OM-THML2
OM-ML409	75	Software and cable for IBM PCs with 9 pin RS232 connection
OM-ML425	75	Software and cable for IBM PCs with 25 pin RS232 connection
OM-THML1	30	Air sensor
OM-THML2	70	General purpose/penetration probe
OM-MLSW1	45	Remote contact cable for OM-ML41/81, 1 meter
OM-MLSW5	55	Remote contact cable for OM-ML41/81, 5 meters
OM-MLSW10	75	Remote contact cable for OM-ML41/81, 10 meters

All temperature dataloggers include a magnetic key and user's manual.

Ordering Example: OM-ML40 datalogger, OM-ML409, cable and software, \$145 + 75 = \$220.

Event Loggers

To Order (Specify Model No.)		
Model No.	Price	Description
OM-MLE2	\$295	2000 reading event datalogger
OM-MLE8	330	8000 reading event datalogger
OM-MLE09	75	Software and cable for IBM PCs with 9 pin RS232 connection
OM-MLE25	75	Software and cable for IBM PCs with 25 pin RS232 connection

All event dataloggers include an input cable and user's manual.

Ordering Example: OM-MLE2 datalogger, OM-MLE09, cable and software, \$295 + 75 = \$370.